

ByPass Valve for Bent Axis Pumps

ByPass Valve for Hydraulic Bent Axis Piston Pumps

12V ByPass Valve

24V ByPass Valve

Designation;

12V ByPass Valve

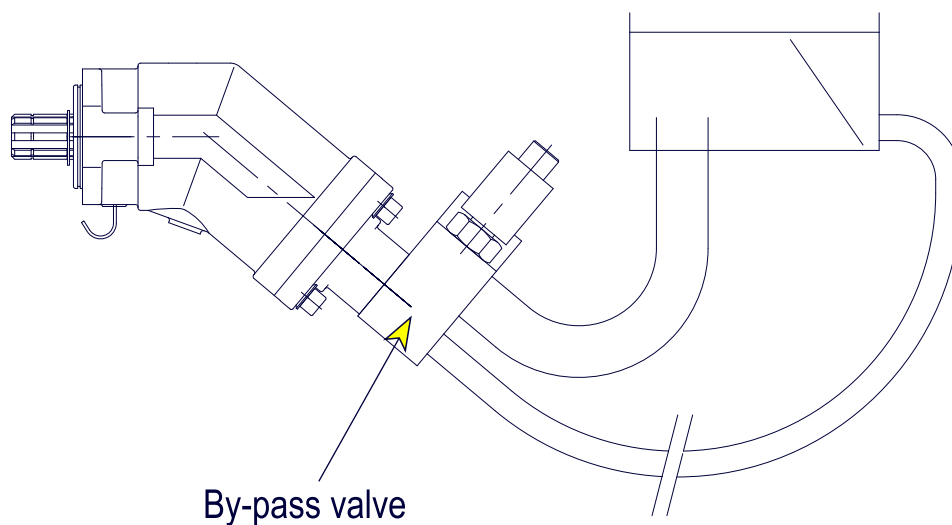
24V ByPass Valve



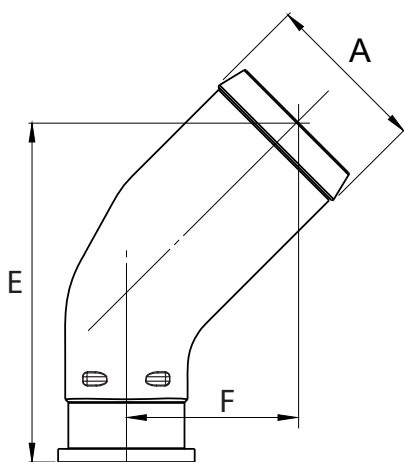
Hidrapac **Store**

www.HIDRAPAC.com.tr

ByPass Valve for Bent Axis Pumps

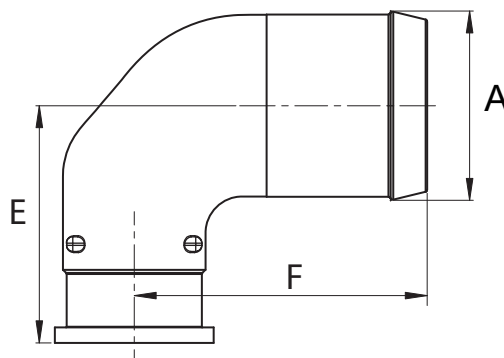


45° elbow fittings



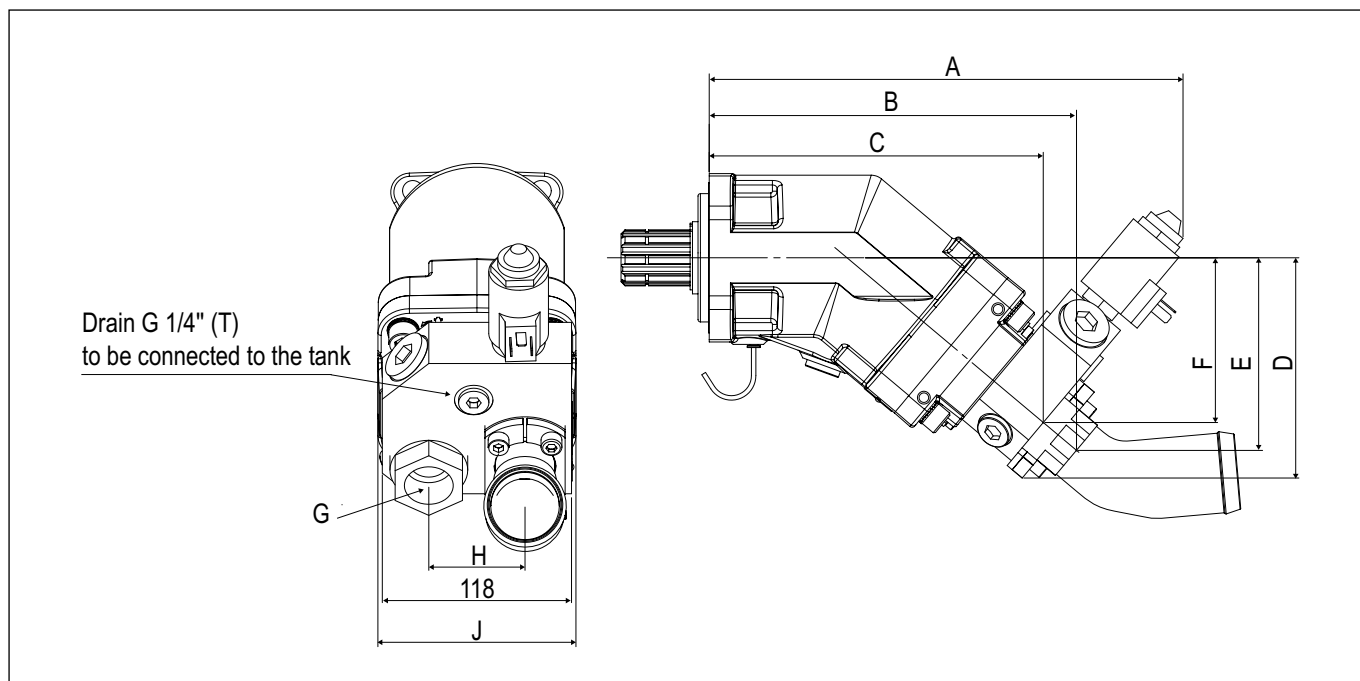
Ø hose	Ø A	E	F
1 1/2"	39.1	91.7	46.7
42	43	91.7	46.7
1 3/4"	46	91.7	46.7
2"	51.8	108.4	54.4
2 1/2"	64.5	125.2	62.2

90° elbow fittings



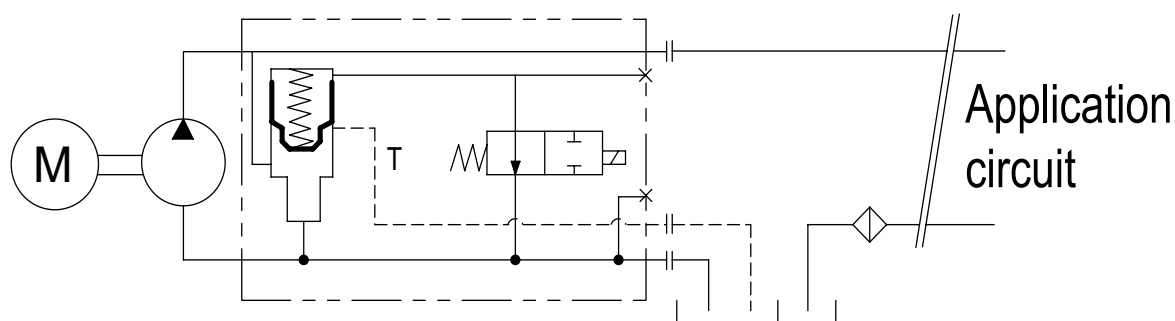
Ø hose	Ø A	E	F
1 1/2"	39.1	58.6	79.5
2"	51.8	64.9	80.2
2 1/2"	64.5	71.3	87.5

ByPass Valve for Bent Axis Pumps



Pump MODEL	DISPL. (cc)	A	B	C	D	E	F	G	H	J
5 cc	5.1	289.35	223.04	202.19	132.20	114.72	97.58	G 3/4"	54	108
10 cc	10.2	289.35	223.04	202.19	132.20	114.72	97.58	G 3/4"	54	108
12 cc	12.0	289.35	223.04	202.19	132.20	114.72	97.58	G 3/4"	54	108
18 cc	18.0	289.35	223.04	202.19	132.20	114.72	97.58	G 3/4"	54	108
25 cc	25.0	289.35	223.04	202.19	132.20	114.72	97.58	G 3/4"	54	108
32 cc	32.0	295.50	229.00	208.30	137.30	120.10	102.70	G 3/4"	54	108
41 cc	41.0	295.50	229.00	208.30	137.30	120.10	102.70	G 3/4"	54	108
50 cc	50,3	307.10	240.40	220.00	147.10	129.70	112.50	G 3/4"	54	108
56 cc	56,0	307.10	240.40	220.00	147.10	129.70	112.50	G 3/4"	54	108
63 cc	63.0	307.10	240.40	220.00	147.10	129.70	112.50	G 3/4"	54	108
80 cc	80,4	334.00	269.00	246.70	157.80	143.90	124.80	G 1"	60	123
108 cc	108	334.00	269.00	246.70	157.80	143.90	124.80	G 1"	60	123
130 cc	130	336.30	271.3	249.00	159.70	145.80	126.70	G 1"	60	123

ByPass Valve for Bent Axis Pumps



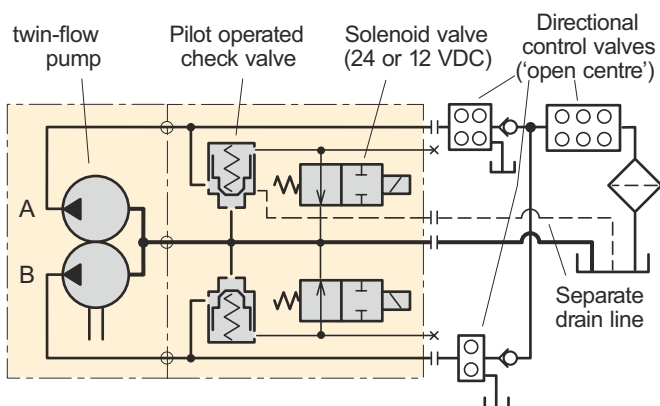
Pump MODEL	DISPL. (cc)	WEIGHT WITHOUT INLET FITTING (kg)	WEIGHT WITH 2" INLET FITTING (kg)	TORQUE WITHOUT FITTING (N.m)	TORQUE WITH FITTING (N.m)
5 cc	5.1	9.00	9.40	8.20	8.60
10 cc	10.2	9.00	9.40	8.65	9.05
12 cc	12.0	9.20	9.60	8.74	9.14
18 cc	18.0	9.30	9.70	8.79	9.19
25 cc	25.0	11.00	11.40	8.89	9.29
32 cc	32.0	11.10	11.50	11.10	11.50
41 cc	41.0	11.20	11.60	11.15	11.55
50 cc	50,3	11.30	11.70	11.75	12.15
56 cc	56,0	11.35	11.75	11.80	12.20
63 cc	63.0	11.45	11.85	11.85	12.25
80 cc	80,4	14.80	15.20	17.80	18.30
108 cc	108	14.90	15.30	17.92	18.42
130 cc	130	15.30	15.70	18.70	19.50

DUAL FLOW PUMP bypass valve

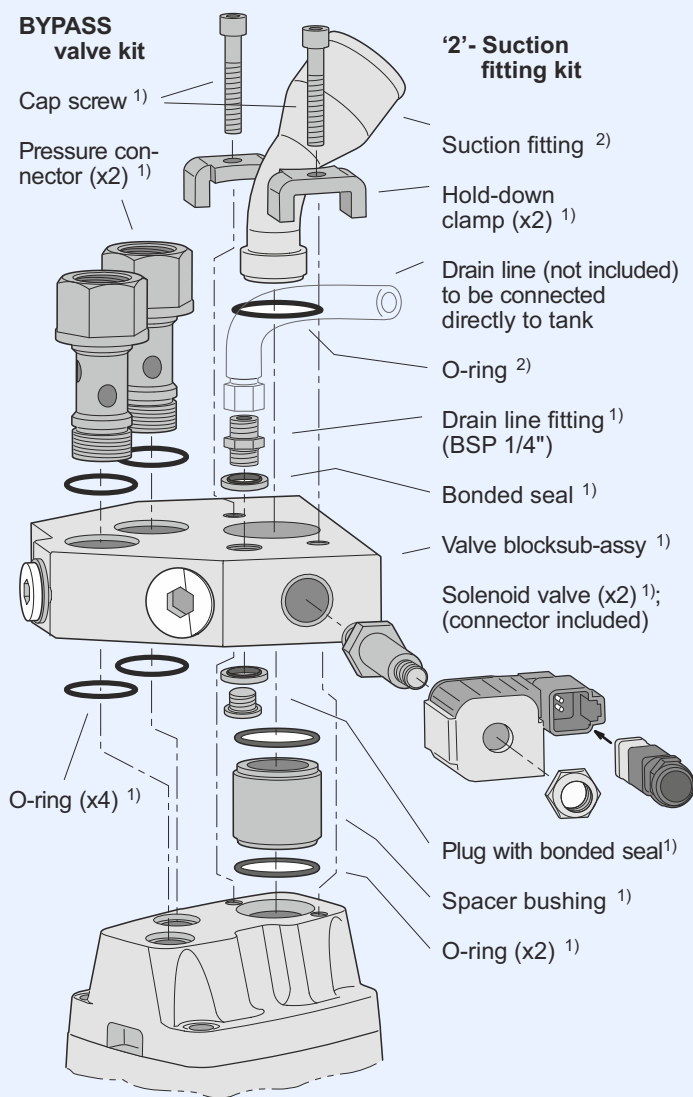
- A dual/twin pump fitted with a bypass valve can be utilised in applications where the pump is operating constantly i.e. when the pump is driven from the crankshaft through a cardan shaft, or when it is installed on an engine-PTO. In addition, it can be used when, temporarily, one of the two circuits is not required; the power loss is thus reduced as the non-required flow is not forced through lines and 'open center' valves.
- The DUAL bypass valve should be disengaged during transportation when the pump is operating constantly and the engine is running at max rpm; the hydraulic system is not sized for the large flow that would otherwise go through it.
- The DUAL valve connects the outlet and inlet ports of the pump, and only a small oil flow goes through the system and to the reservoir.
- The valve is installed directly on top of the pump port surface with 'banjo' fittings and two cap screws (refer to the split view to the right).
- As the DUAL valve is symmetrical it can be 'turned 180°' so as not to interfere with chassis components. The valve can accommodate left hand as well as right hand rotating pumps.
- The valve can only be engaged or disengaged (through the 24 or 12 VDC solenoid) at low system pressures (below 20 bar).

IMPORTANT INFORMATION

- In order to secure a cooling flow through the system, a separate drain line **must** be connected from the BPV-pump drain line fitting (shown in the split view) directly to tank; refer also to the schematic.
- The pressure connectors must be tightened (to 50 Nm) before the suction fitting clamp screws are tightened.



Bypass valve circuit schematic (example).



Bypass valve split view without manual override (with dual flow pump end cap).

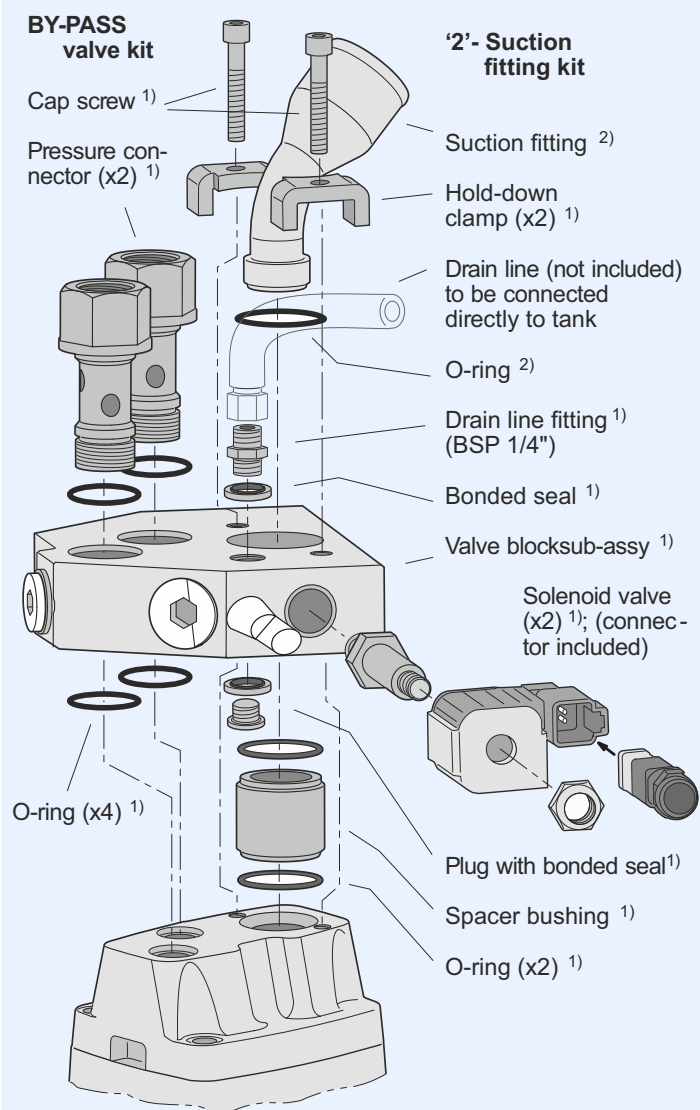
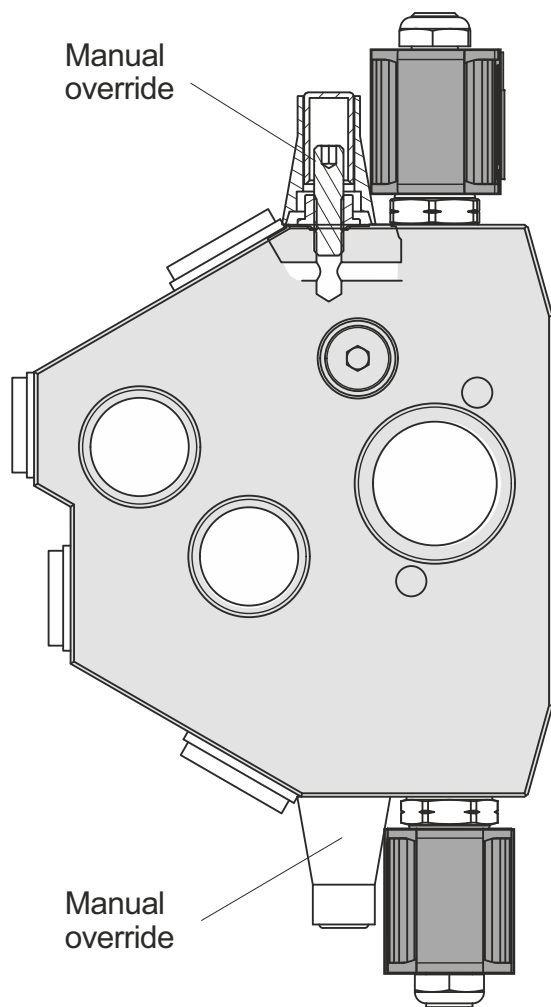
NOTE: A suction fitting kit (parts designated '2' in the split view) is **not** included with the pump; it must be ordered separately.

Bypass valve (Dual Flow Pump)

Without manual override

Bypass valve, type	Dual Flow Pump
Max pressure, continuous	350 bar
intermittent	400 bar
Solenoid voltage (option)	24 VDC, (12 VDC)
Power requirement	14 W (each solenoid)
Operating mode	Activated solenoid: Check valve closed

Bypass valve ¹⁾	Voltage	Ordering number	Dual Flow	Torque ³⁾
ByPass	24 VDC	2400 565	42/42,	50 Nm
	12 VDC	1200 565	53/53, 55/28, 70/35, 70/70	



Bypass valve split view with manual override (with pump end cap).

NOTE: A suction fitting kit (parts designated '2' in the split view) is **not** included with the pump; it must be ordered separately

Hydraulic Pumps



K2FA (DIN)

BENT AXIS PISTON PUMPS



K2FL (DIN)

ALUMINUM BODY
BENT AXIS PISTON PUMPS



A2FD (DIN)

DUAL FLOW
BENT AXIS PISTON PUMPS



A2FO (ISO)

BENT AXIS PISTON PUMPS



A2FS (SAE)

BENT AXIS PISTON PUMPS



AXVP Series

VARIABLE DISPLACEMENT
PISTON PUMPS



A3PP Series

AXIAL PISTON PUMPS



A3PH Series

HIGH PRESSURE
PISTON PUMPS



ByPass Valve

FOR
BENT AXIS PISTON PUMPS



LS Adapters

FOR
VARIABLE PISTON PUMPS

Hydraulic Motors



K2FM (DIN)

BENT AXIS PISTON MOTORS



A2FM (ISO)

BENT AXIS PISTON MOTORS



A2MS (SAE)

BENT AXIS PISTON MOTORS



A2FE (FixedPlug)

BENT AXIS PISTON MOTORS



Anti Cavitation

VALVE
BENT AXIS PISTON MOTORS

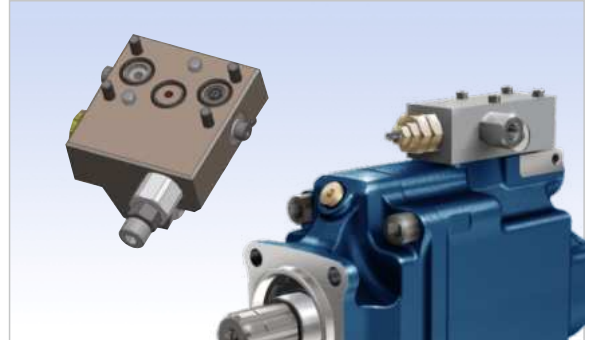
ByPass Valve

for Bent Axis Piston Pumps



LS Adapter

for Variable Displacement Piston Pump



Suction Fittings

for Bent Axis Piston Pumps



Flushing Valve

for Bent Axis Piston Motors



Adapter

for Bent Axis Piston Pumps



Flange, Couplar

for Bent Axis Piston Pumps



Hydraulic Pumps, Hydraulic Motors

Bent Axis Hydraulic Piston Pumps, Bent Axis Piston Motors,
Dual Flow Hydraulic Piston Pumps, Variable Displacement Piston Pumps,
High Pressure Piston Pumps, Straight Axial Piston Pumps..



Address;

HIDRAPAC HYDRAULIC PUMP & MOTORS

Address; (PRODUCTION)

Fevzicakmak Mah. Sila Cad. Kobisan 3 San. Sit.
No: 73 / C Karatay – Konya, PO Code; 42050, Turkiye

Address; (ASSEMBLE, SHIPMENT)

Fevzicakmak Mah. Sila Cad. Kobisan 3 San. Sit.
No: 71 / AD Karatay – Konya, PO Code; 42050, Turkiye

Phone; +90 551 111 77 44